

# FARO Gage & Gage-PLUS



**[A] 1,2m ( 48" ) Working Volume**

*Ideal for all your small parts, molds and assemblies*

**[B] Temperature & Overload Sensors**

*Allow the Gage to "feel" and react to thermal variations and improper handling for maximum accuracy*

**[C] Internal Counterbalancing**

*Allows the user to move fatigue-free FARO Gage easily with one hand*

**[D] Multi-Probe Capability**

*Including various Ball Diameters, Touch-Sensitive, Curved, and Extensions*

**[E] Extended-Use Battery**

*Optional — Provides true "measure anywhere" capability*

**[F] Universal 3.5" Quick Mount**

*offers "mount-it-towhere-you-make-it" convenience and less downtime*

## A Personal CMM!

The FARO Gage and Gage-PLUS are the industry's first line of personal Coordinate Measuring Machines (CMMs). With their 1,2m (48") working volume, they are the "mount-it-to-where-you-make-it", truly portable, cost-effective, 3-Dimensional, minimal-training gages for machinists. The FARO Gage line replaces all conventional gaging devices with an expandable library of gaging tools. Save time and money by replacing your cluttered inspection area with the one tool that can do it all.

## Most Common Applications

**Aerospace:** Repair & Refit

**Tool & Die:** Master Molds, Tool Setup

**Automotive:** Body in White, Functional Build

**Castings & Moldmaking:** Pre-Cast Mold, Composite Tooling

## Features

- ▶ HIGH accuracy, LOW price
- ▶ Portable and easier-to-use than a fixed CMM
- ▶ Mount and measure parts in process
- ▶ Up to .005 mm (.0002") accuracy
- ▶ Generate GD&T & SPC reports

# FARO Gage & Gage-PLUS

## Applications



### ANGLES

Hole to Hole  
Cylinder to Cylinder  
Cylinder to Face  
Edge to Edge  
Edge to Face  
Face to Face



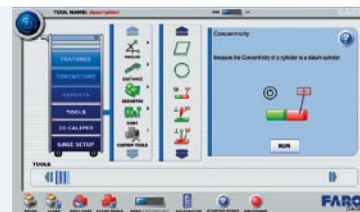
### GEOMETRY

4-Hole Bolt Patterns  
Round Slot  
Cylinder  
Edge  
Hole  
Face



### DISTANCE

Face to Face  
Edge to Edge  
Cylinder to Cylinder  
Hole to Hole Center  
Hole to Hole Minimum  
Hole to Hole Maximum



### GD&T

Flatness  
Circularity  
Straightness  
Parallelism  
Perpendicularity  
Concentricity

## Performance Specifications

Model	Measuring Volume	ISO 10360-2	
		E (µm)	R (µm)
<b>Gage-PLUS</b>	1200 mm (48") sphere	5+8L/1000	6
<b>Gage</b>	1200 mm (48") sphere	10+16L/1000	12

B89 Specification based upon testing as outlined by ISO 10360-1 Standards. ISO Specification based upon testing as outlined by ISO 10360-3 Standards.

## Hardware Specifications

**Operating Temp range:** 10°C to 40°C (50°F to 104°F)  
**Temperature Delta:** 3°C/5min. (5.4°F/5min.)  
**Humidity:** 95%, noncondensing  
**Calibration Lifecycle:** Permanent  
**Power Supply:** Universal worldwide voltage  
 85-245VAC,  
 50/60 Hz

**Certifications:** CE compliance  
 Directive 93/68/EEC, (CE Marking)  
 Directive 89/336/EEC, (EMC)  
 FDA CDRH, Subchapter J of 21 CFR 1040.10  
 Electrical Equipment for Measurement, Control & Lab Use  
 EN 61010-1:2001, IEC 60825-1, EN 61326  
 Electromagnetic Compatibility (EMC)  
 EN 55011, EN 61000-3-2, EN 61000-3-3  
 EN 61000-4-4, EN 61000-4-5  
 EN 61000-4-6, EN 61000-4-8, EN 61000-4-11



**ISO-17025 : 2005  
ACCREDITED  
Certificate # L1147**

Global Sales Offices: USA • Germany • Swiss • France • United Kingdom • Spain • Italy • Netherlands • Poland • Singapore • China • Japan • India

[www.faro.com](http://www.faro.com)

freecall: 00800 3276 7253